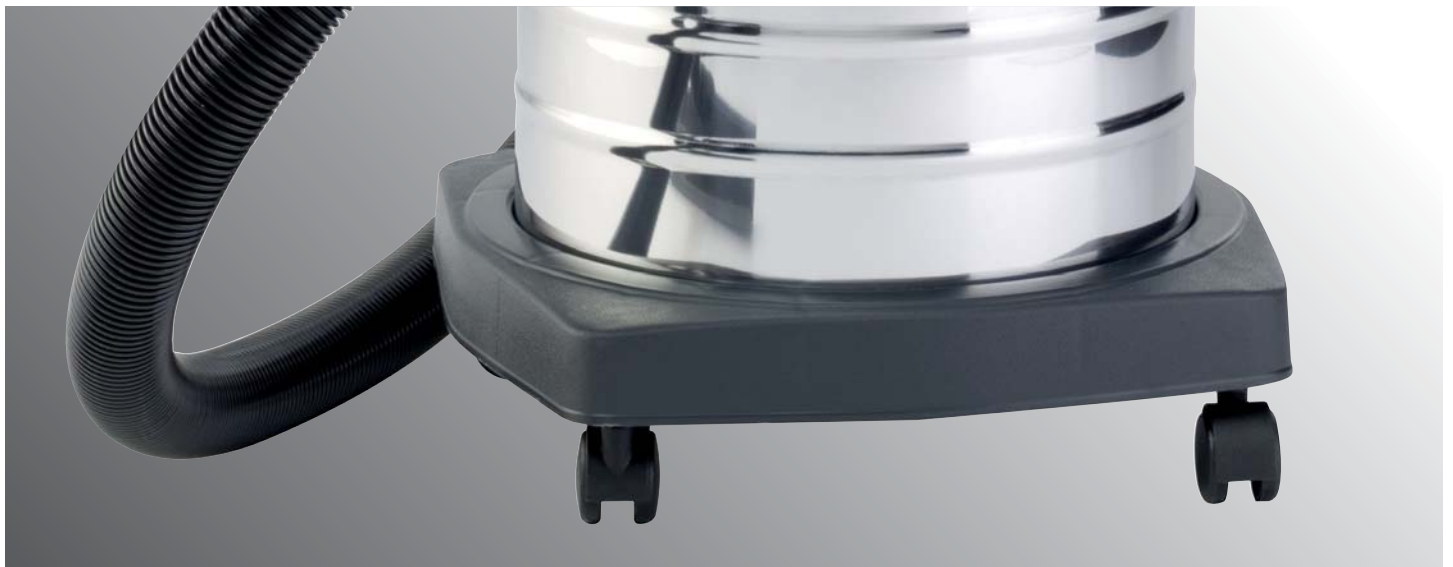


DATA SHEET.

WET AND DRY VACUUM CLEANER.

SW 30IS



G. Staehle GmbH u. Co. KG
Mercedesstraße 15
D 70372 Stuttgart
Telefon +49 (0) 7 11/95 44-950
Telefax +49 (0) 7 11/95 44-941
info@columbus-clean.com
www.columbus-clean.com

columbus

CLEANING ON THE MOVE: THE HIGH SUCTION COMPACT CLASS.

SW 30IS

- Well equipped for basic cleaning, initial construction cleaning or use in workshops: wet & dry vacuum cleaners with compact vacuum tanks made of chromium steel (S).
- Robust and sturdy design: secure positioning and convenient transport every time.
- Extensive range of professional accessories: a roller-guided wet suction tool as well as additional accessories for dry and wet cleaning are series-standard and included in delivery. A large assortment of special extras is also available.
- Hygienic dry cleaning: the specially pre-treated sanifilter cloth bag – series-standard for the SW 30IS wet and dry vacuum cleaner – prevents the growth of bacteria, viruses, fungi (yeasts and mould) and microparasites that have been vacuumed up.



The handy, compact and mobile single-motor all-rounder with 32-litre tank capacity for professional use on small surfaces.

SW 30IS

L x B x H	430x430x830 mm
Working width	400 mm
Suction hose	2,5 m
Tank capacity	32 l
Noise level	73,4 dB(A)
Weight	13 kg

ELECTRICAL DATA

Rated voltage	230 V
Power max.	1200 W
Mains cable	12 m

SUCTION MOTOR

Low pressure, max.	240 mbar
Air flow, max.	58 l/s
Number of motors	1

