

X 500  
X 500|S

# EXCENTER EXCELLENCE!

**FLAT. MODULAR. MOBILE.  
THE COLUMBUS AMONG THE  
EXCENTER MACHINES.**



**columbus**

# REDEFINING THE EXCENTER MACHINES.

**MAXIMUM COMFORT. HIGHEST QUALITY.  
THE X 500 EXCENTER SERIES.**

Easy operation, fast working speed, effortless cleaning close to the edge - our X 500 models offer all the typical excenter advantages. But at the same time they offer so much more. With unique features and the highest quality, they set completely new standards and prove to be what they are: the columbus among excenter machines!



X 500|S

X 500



## **COMFORTABLE & USER-FRIENDLY**

Built to be ergonomic, silent and low in vibration, our X 500 models provide accuracy that is amazingly easy to accomplish and easy to operate. On top, the X 500|S model in particular impresses with many innovative features that radically simplify the often difficult transport of the machine.



## **ROBUST & DURABLE**

No matter which of our two excenter machines you choose: As always, columbus stands for extremely robust construction, high-quality materials, first-class engineering, reliable technology and, all in all, a long service life. Unique quality „Made in Germany“.



## **COST EFFECTIVE & LONG LASTING**

Both models score in terms of cost-effectiveness: the X 500 model as a very attractively priced entry-level variant that nevertheless masters all the typical excenter advantages to perfection. The X 500|S model, on the other hand, is a mobile trouble-shooter that fits easily into any car thanks to its extremely modular design.

**MAKE AN APPOINTMENT FOR A DEMO NOW**

**CONTACT YOUR LOCAL DEALER!**

✉ [export@columbus-clean.com](mailto:export@columbus-clean.com)



**ONLY 240 MM UNDERCLEARANCE**

## **EXTREME LOW-PROFILE**

The extreme low-profile design of our X 500|S model is an absolutely unique selling point. An incredible 240 mm underclearance means less time consuming moving around, repositioning of objects and follow-up work. In other words: More efficiency and profitability.

**CONVENIENT & TOOL-FREE**

## **QUICK CLAMPING SYSTEM**

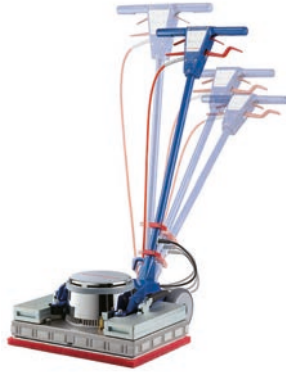
Incredibly simple! With the patent-pending quick-clamping system, the machine can be dismantled and the weights removed and attached without tools. The weights increase the pressure by 15 kg.



**LESS THAN 35 KG LIFTING LOAD**

## **EASY TRANSPORT**

„The most transport-friendly excenter machine on the market!“ The X 500|S model lives up to this claim in several ways: on the one hand, the machine body and chassis can be separated without tools and transported individually. On the other hand, the levers of the quick-clamping system can also be used as comfortable carrying handles to transport the remaining lifting load of less than 35 kg.



**REINFORCED POWER CORD**  
**ADJUSTABLE**  
**GUIDE BAR**

The ergonomic guide bar on both models is individually adjustable to the user and can be locked in all positions. The mains cable in bright red is made of robust PU, which effectively protects the internal cables from damage.



**CLEAN CLOSE TO THE EDGE**  
**PERFECT**  
**INTO THE CORNER**

With their angular pads, our X 500 models get into every corner easily and thoroughly, helping to avoid time-consuming manual follow-up work.

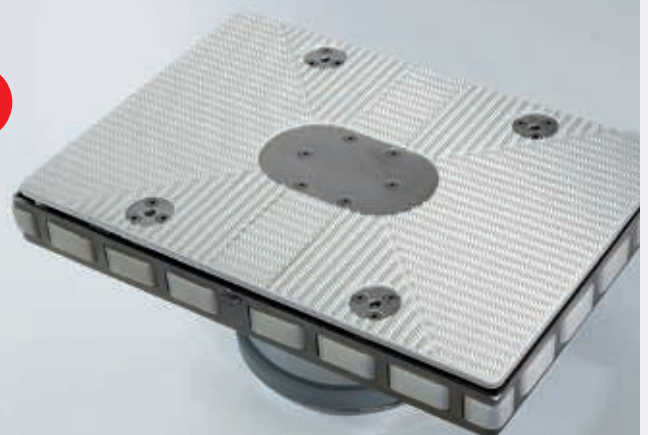


**PROTECTS MACHINE & ENVIRONMENT**  
**SILICON**  
**BUMPER**

The flexible and extremely tear-resistant silicone bumper provides optimum protection for the machine body as well as skirting boards and walls when working close to the edge. Another quality feature and unique selling point of our excenter series.

**FLEXIBLE AND LONG-LASTING**  
**INNOVATIVE**  
**HOOK PLATE**

Unlike rigid hook plates, our design is much more flexible. This gives the pad optimal support and ensures both comfort and ease of use.





# TECHNICAL DATA



DATA	X 500	X 500 S
L x W x H	540 x 500 x 1170 mm	540 x 500 x 1170 mm
Working width	500 mm	500 mm
Weight	53,5 kg	56 kg
Additional weight	15 kg	15 kg
Ground clearance	335 mm	240 mm
Noise level	69 dB (A)	64 dB (A)
Speed	2810 U/min	3000 U/min
ELEKTRICAL DATA		
Rated voltage	230 V	230 V
Frequency	50 Hz	50 Hz
Power max.	750 W	1200 W
Mains cable	12 m	12 m
Protection class	IPX4 / IP55 (Motor)	IPX4
TANK		
Tank volume	12 l	12 l

**ALL DETAILS  
ONLINE NOW!**



G. Staehle GmbH u. Co. KG  
Mercedesstraße 15  
70372 Stuttgart  
Telefon: +49 711 95 44 – 960  
export@columbus-clean.com  
www.columbus-clean.com

**columbus**